



KLUVEN

life is not black or white

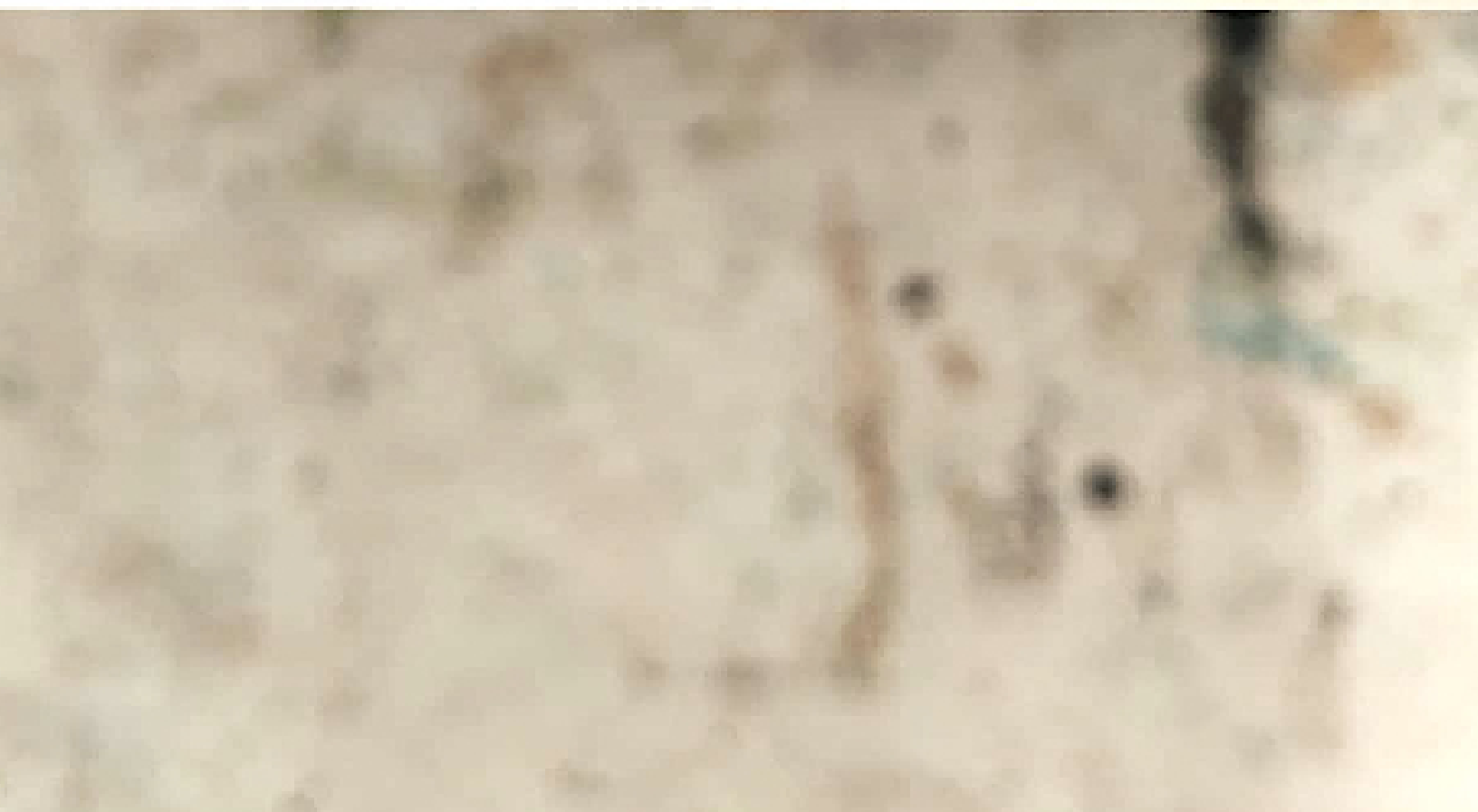
Kluven is a documentary project, developed from a series of interviews conducted during the time of pandemics, and in close collaboration with migrant women who have been forced, or chosen, to move from their homeland as a way to build new lives, but without familiar cultural references, social codes or political heritage.

Within Kluven, I focus on invisible problems and attempt to illustrate the burdens of the human condition. I examine the identity of immigrants through my own perspective to find a common narrative.

Through the collection of interviews, I correlate personal experiences with the emotional conflicts, compromises, and struggles of being balanced between two worlds, across borders, anew in an unknown country, as a way to highlight the global fate of immigrants.

For many people, living abroad, separated from native countries and cultures, the corona virus crisis has shown the importance, and sometimes (im)possibility of travel, as a connection to other lives, only increasing feelings of loneliness, and questions around identity and belonging.

I've not get roots now.



to fit as much as possible
as much as possible

to fit as much as possible

I don't want to be split.



you learn how to function
how to function in society



split... cleaved...



I have to choose all the time.



these are difficult things

to put into words



a wife

a mum

someone



big differences in mentality



Who are you really?

